



Differential Pressure Overflow Valves

VS920...
VS932...

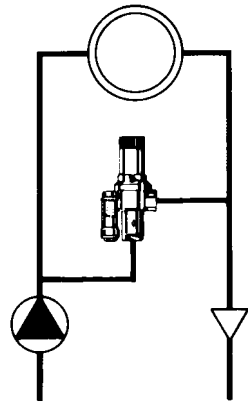
with differential pressure indicator

Application

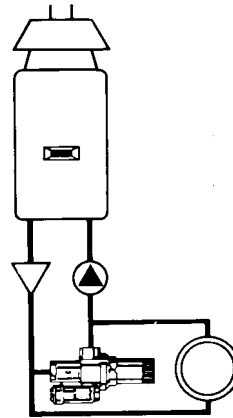
The differential pressure overflow valve is suited for use in heating plants and district heating systems.

- Heating plants with own combustion plant up to approximately 70 kW: VS920
- Heating plants with own combustion plant up to approximately 230 kW: VS932
- District heat substations with flow rates up to 3 m³/h: VS920F
- District heat substations with flow rates up to 10 m³/h: VS932F

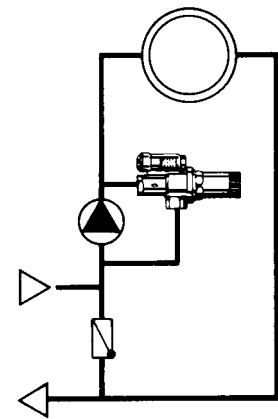
Application examples



Heating plant with heating boiler



Heating plant with gas-fired appliances



District heat substation

Summary of Types

| Rp | Type reference | For use in | Version |
|--------|----------------|--------------------------|-------------|
| 3/4" | VS920 | Heating plants | Angle valve |
| 1 1/4" | VS932 | | |
| 3/4" | VS920F | District heating systems | Angle valve |
| 1 1/4" | VS932F | | |

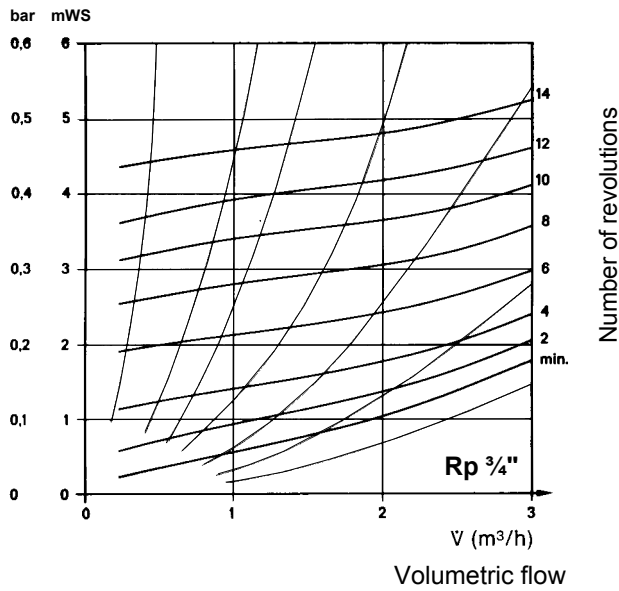
Functions

- **Keeping the pump pressure at a constant level**
 - Avoiding noise when radiator valves are closed
 - Stabilising room temperature control
- **Ensuring minimum flow of water**
 - For gas-fired appliances
 - At the flow temperature dedector with weather-compensated flow temperature control (even when radiator valves are closed)

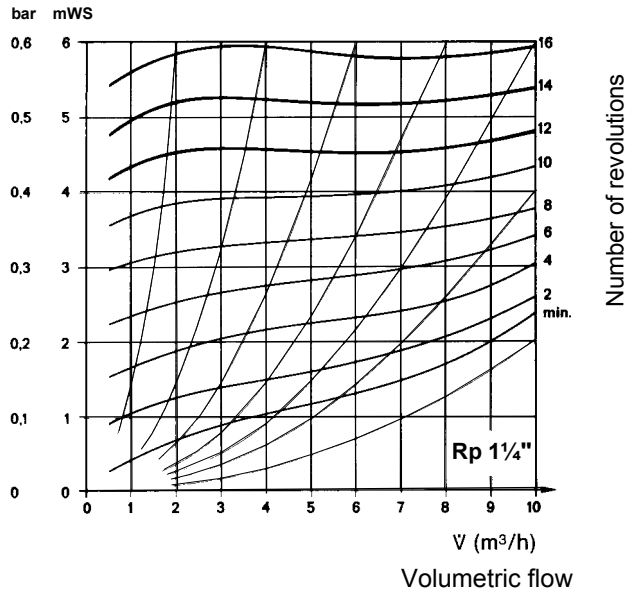
Adjustment

- Differential pressure can be read at differential pressure indicator
- Differential pressure preset at works to 0.2 bar (standard value)
- Differential pressure adjustable from 0.05...0.5 bar by turning the handle:
 1. Turn handle anti-clockwise back to the stop (starting position)
 2. Turn handle clockwise until desired flow rate is obtained. For number of turns, see diagram

Pump pressure



Pump pressure



Technical Data

| | VS920 VS932 | VS920F VS932F |
|----------------------------|--|------------------|
| Operating temperature max. | 110 °C | 130 °C |
| Operating pressure max. | 3 bar | 16 bar |
| Spring cover | plastic | brass |
| Differential pressure | | |
| – Adjustable | 0.05...0.5 bar | |
| – Standard works setting | 0.2 bar | |
| Body | brass | |
| Pressure indicator | glass | |
| Diaphragm | EPDM | |
| Connections | Inlet and outlet Rp (female thread) | |

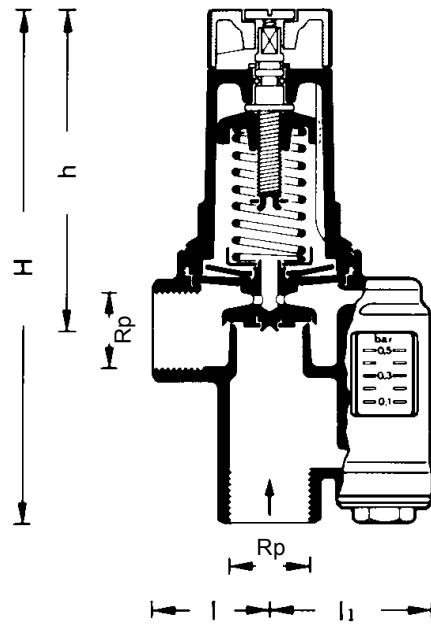
Application Advice

- No control line necessary
- For application examples, refer to page 1

Mounting

- The valves are supplied complete with Mounting Instructions

Dimensions



| Size Rp | H | h | l | l ₁ |
|------------|-----|-----|----|----------------|
| 3/4" | 160 | 100 | 36 | 50 |
| 1 1/4" | 213 | 155 | 51 | 58 |